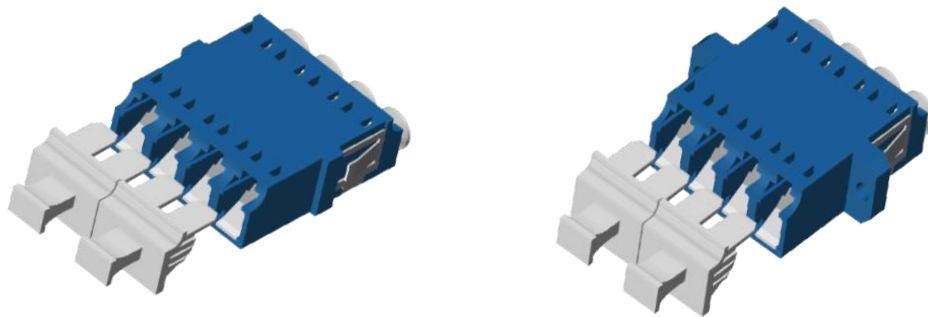


LC Quad Adapter With Shutter Specification



Application:

- 1.Telecommunication Network
- 2.CATV Network
- 3.Data Center Cabling
- 4.Testing
- 5.Optic Networks

Features:

- 1.High size precision
- 2.Compact design
- 3.High precision alignment with zirconia sleeve
- 4.IEC-61754-20/GR326/UL94-V0/ROHS/REACH compliance

Description:

JIAWEI offers internal shutter for adapter to field potentially harmful light.The internal shutter inside is a retractable shutter inside the adapter body and is only actuated by inserting the connector in to the body,designed specifically to prevent end face damage of the ferrule.

Parameter:

Item NO.	Description	Unit	Standard
1	Insertion Loss(dB)	dB	≤0.2dB
2	Repetitiveness(dB)	dB	≤0.1dB
3	Interchangeability (dB)	dB	≤0.2dB
4	Plug times	Times	200 times
5	Tensile strength	G	200-600G
6	Operating temperature	Celsius	-40~+85 Celsius
7	Storage temperature	Celsius	-40~+110 Celsius
8	Humidity	Celsius	95%RH (Non-Packaging)

LC Quad Adapter With Shutter Specificat

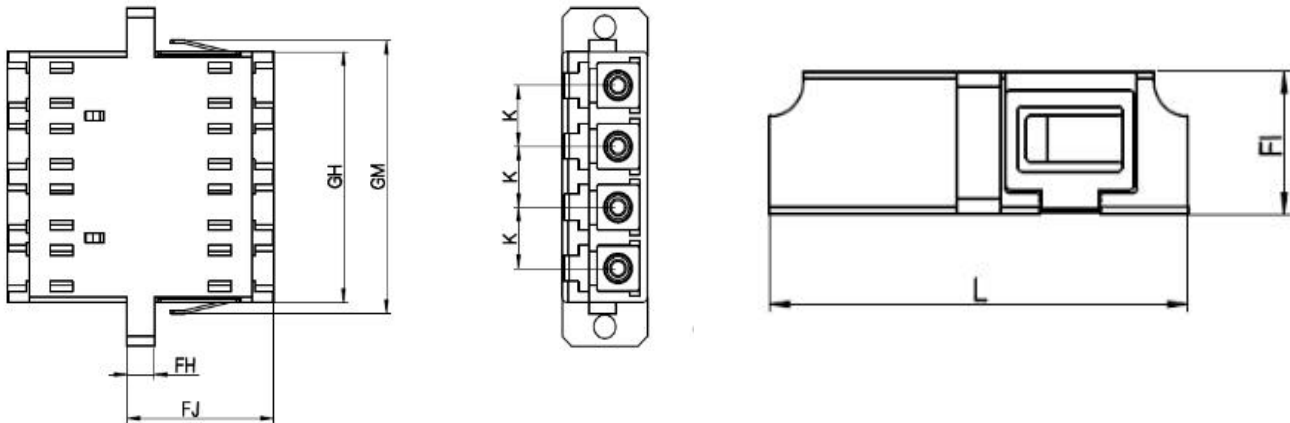
Specification & Order Code:

Code	Type	Color	Sleeve Type
F21	1 With flange	1 Blue	1 Zirconia
	2 Without flange	2 Green	
		3 Aqua	
		4 Beige	
		5 Black	
		6 Heather Violet	
		7 Other custom color	

Order Code Example:F21111

Drawing:

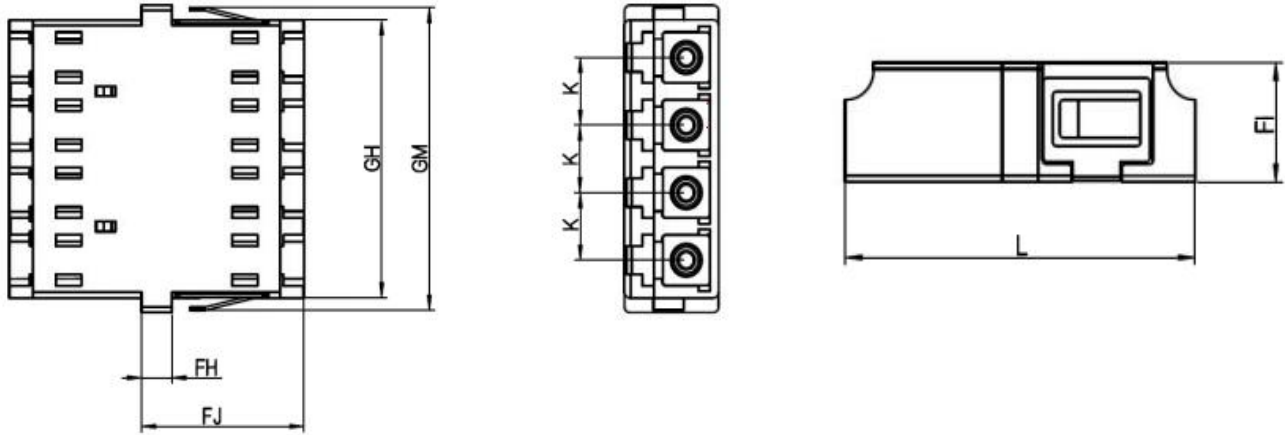
With flange



Ref.	Dimensional Tolerance	
	Min	Max
GH	25.5	25.9
GM	27.5	29.5
FJ	15.95	16.6
K	6.2	6.3
FI	9.2	9.45
FH	2.8	3.2
L	28.5	29.5

LC Quad Adapter With Shutter Specificat

Without flange



Ref.	Dimensional Tolerance	
	Min	Max
GH	25.5	25.9
GM	27.5	29.5
FJ	15.95	16.6
K	6.2	6.3
FI	9.2	9.45
FH	2.8	3.2
L	28.5	29.5

Packing:

Inner packing: 25 pcs/Tray

Outer packing: 1500 pcs/Carton

Carton size: 47*30*31mm

Noted:Packing can be customized for you.