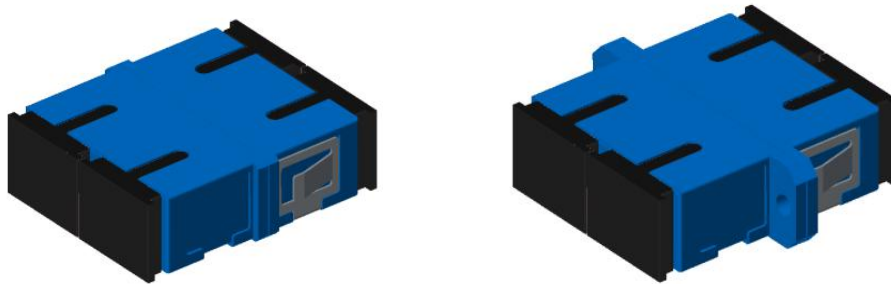


SC Duplex Adapter Specification



Application:

1. Telecommunication Network
2. CATV Network
3. Data Center
4. Testing/Measurement Instruments Fiber To the Home
5. Optic Networks

Features:

1. High size precision
2. Compact design
3. High precision alignment with zirconia sleeve
4. IEC-60874-14-3/GR326/UL94-V0/ROHS/REACH compliance

Parameter:

Item NO.	Description	Unit	Standard
1	Insertion Loss(dB)	dB	≤0.2dB
2	Repetitiveness(dB)	dB	≤0.1dB
3	Interchangeability (dB)	dB	≤0.2dB
4	Plug times	Times	200 times
5	Tensile strength	G	200-600G
6	Operating temperature	Celsius	-40~+85 Celsius
7	Storage temperature	Celsius	-40~+110 Celsius
8	Humidity	Celsius	95%RH (Non-Packaging)

SC Simplex Adapter Specification

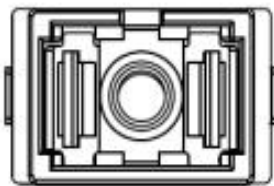
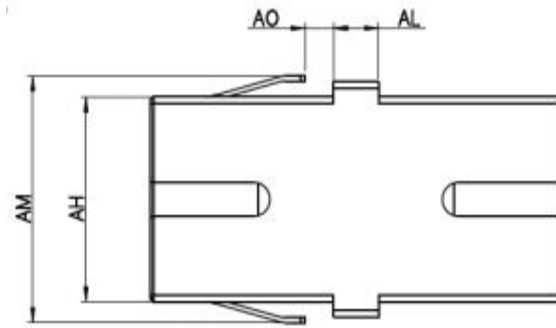
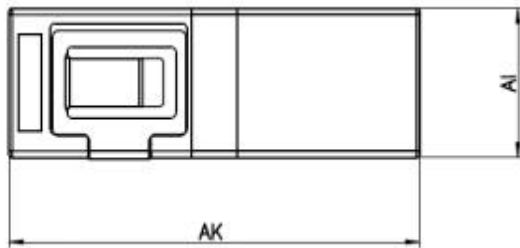
Specification & Order Code:

Code	Type	Color	Sleeve Type
G22	1 With flange	1 Blue	1 Zirconia
	2 Without flange	2 Green	
		3 Aqua	
		4 Beige	
		5 Black	
		6 Heather Violet	
		7 Other custom color	

Order Code Example:G22111

Drawing:

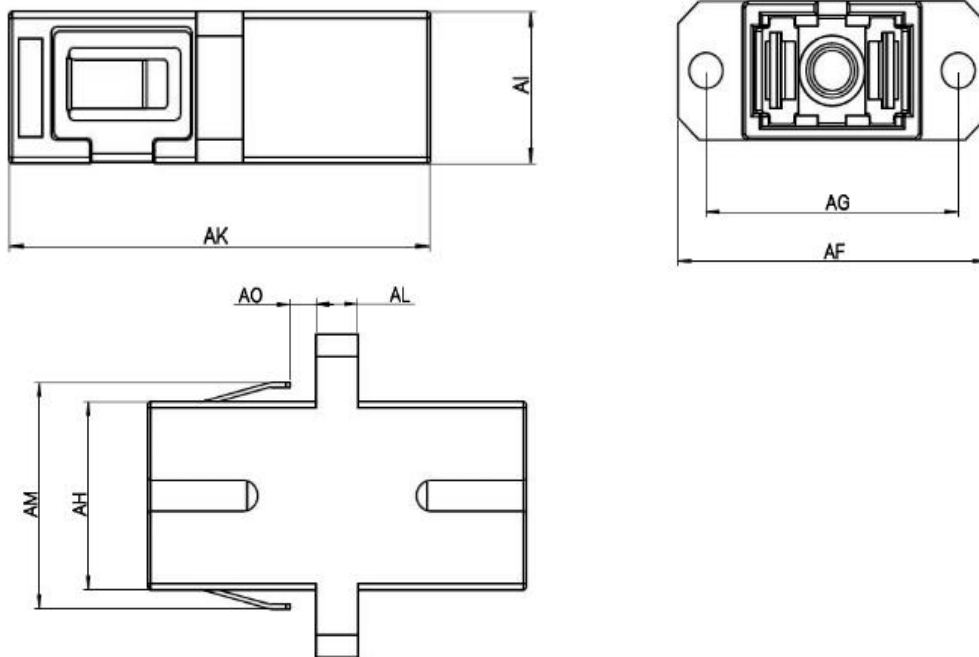
With flange



Ref.	Dimensional Tolerance	
	Min	Max
AK	27	27.8
AI	9.2	9.4
AO	1.7	2.0
AL	2.8	3.2
AH	12.6	13.0
AM	14.4	16.4

SC Simplex Adapter Specification

Without flange



Ref.	Dimensional Tolerance	
	Min	Max
AK	27.0	27.8
AI	9.2	9.4
AG	17.5	18.5
AF	21.5	22.5
AO	1.7	2.0
AL	2.8	3.2
AH	12.6	13.0
AM	14.4	16.4

Packing:

Inner packing: 25 pcs/Tray

Outer packing: 3000 pcs/Carton

Carton size: 47*30*31mm

Noted:Packing can be customized for you.