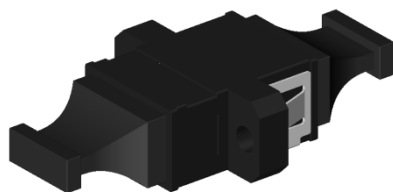


MPO ADAPTOR Specification

1、Appearance



Type.	Color
Regular key	Black
Aligned Key	Black

2、Feature

2.1 Insertion loss

Specification value	
IL	$\leq 0.35\text{dB}$
Repeatability	200 times
Temperature	$-40^{\circ}\text{C}\sim 85^{\circ}\text{C}$

2.2 Part material

Part	Material	Quantity
MPO-ADA Dust Cap	PBT	2
Housing	PBT	1
Clip	SUS	1

3、 Requirement

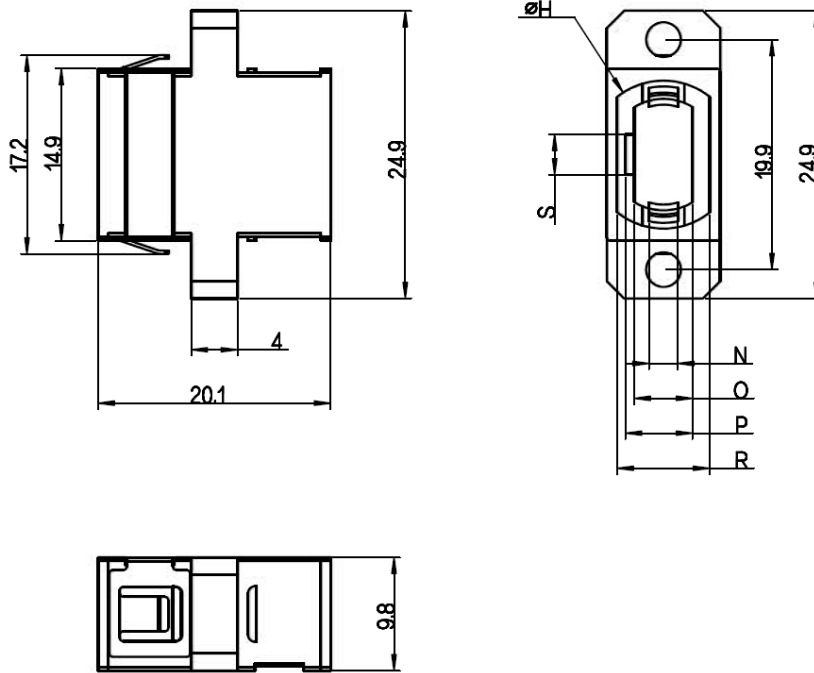
3.1 Meet IEC_61754-7

3.2 Meet GR-326 & GR-1435core

3.3 Flame Rating: UL94-V0

3.4 ROHS compliance: RoHS2.0 & REACH

4、 Size



Ref.	Dimensional tolerance	
	Min	Max
S	3.4	3.6
N	2.4	2.6
O	5.0	5.1
P	5.7	5.9
R	7.8	8.2
H	12.6	13.0

5、 Packing

Inner packing: 50pcs/Package

Outer packing: 2500pcs/Carton

Carton Size: 45cm*31cm*23cm