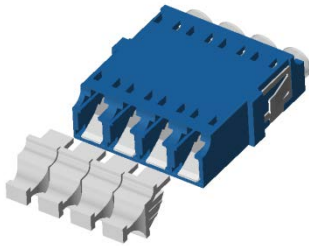


LC ADAPTOR Specification

1、Appearance



Type.	Color
SM-PC	Blue
SM-APC	Green
MM	Beige
OM3	Aqua
OM4	Violet

2、Feature

2.1 Insertion loss

Specification value	
IL	≤0.2dB
Repeatability	200 times
Temperature	-40℃~85℃

2.2 Part material

Part	Material	Quantity
LC-ADA Dust Cap1	PE-White	4
LC-ADA Dust Cap2	PE-White	4
Housing	PC	1
Clip	SUS	1
SLEEVE	ZrO2-White	4
Shutter	SUS	4

3、 Requirement

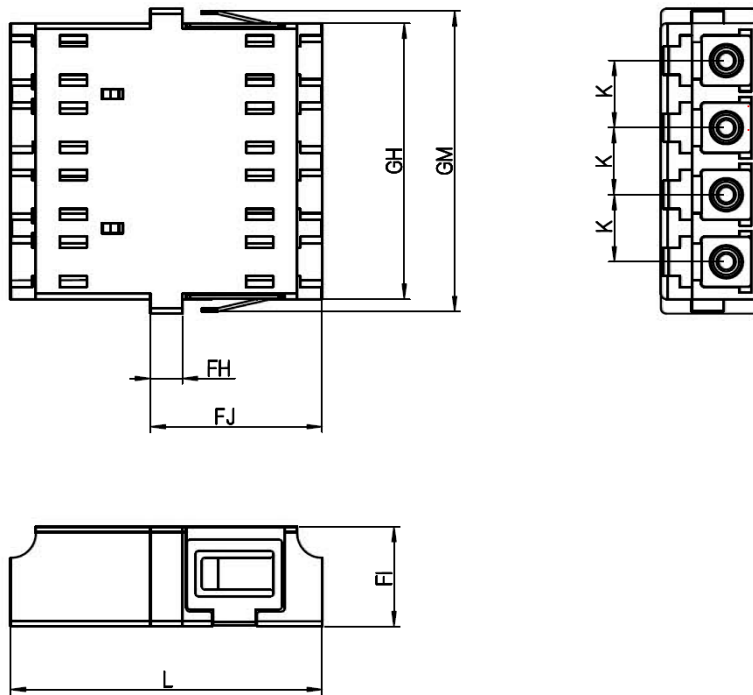
3.1 Meet IEC_61754-20

3.2 Meet GR-326 core

3.3 Flame Rating: UL94-V0

3.4 ROHS compliance: RoHS2.0 & REACH

4、 Size



Ref.	Dimensional tolerance	
	Min	Max
GH	25.2	25.9
GM	27.5	29.5
FJ	15.95	16.6
K	6.2	6.3
FI	9.2	9.45
FH	2.8	3.2
L	28.5	29.5

5、 Packing

Inner packing: 25pcs/Tray

Outer packing: 1500pcs/Carton

Carton Size: 47cm*30cm*31cm