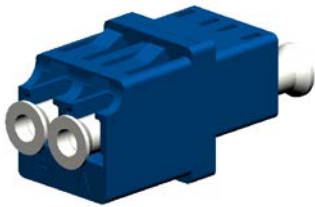


LC ADAPTOR Specification

1、Appearance



Type.	Color
SM-PC	Blue
SM-APC	Green
MM	Beige
OM3	Aqua
OM4	Violet

2、Feature

2.1 Insertion loss

Specification value	
IL	$\leq 0.2\text{dB}$
Repeatability	200 times
Temperature	$-40^{\circ}\text{C}\sim 85^{\circ}\text{C}$

2.2 Part material

Part	Material	Quantity
LC-ADA Dust Cap	PE-White	4
Housing-A	PC	1
Housing-B	PC	1
SLEEVE	ZrO ₂ -White	2

3、 Requirement

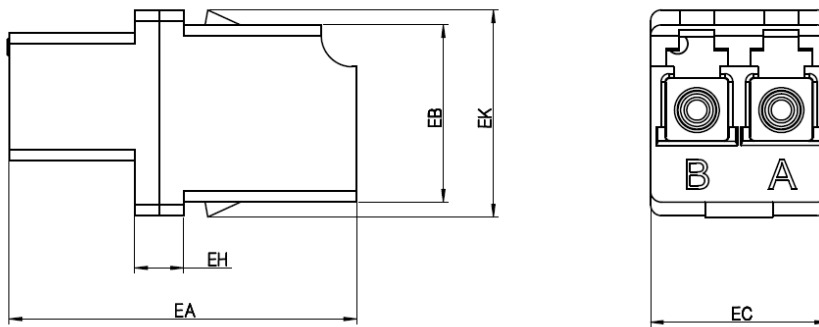
3.1 Meet IEC_61754-20

3.2 Meet GR-326 core

3.3 Flame Rating: UL94-V0

3.4 ROHS compliance: RoHS2.0 & REACH

4、 Size



Ref.	Dimensional tolerance	
	Min	Max
EA	25.5	27.5
EH	-	3.8
EB	13.0	13.15
EK	14.5	15.3
EC	13.0	13.15

5、 Packing

Inner packing: 25pcs/Tray

Outer packing: 1500pcs/Carton

Carton Size: 47cm*30cm*31cm