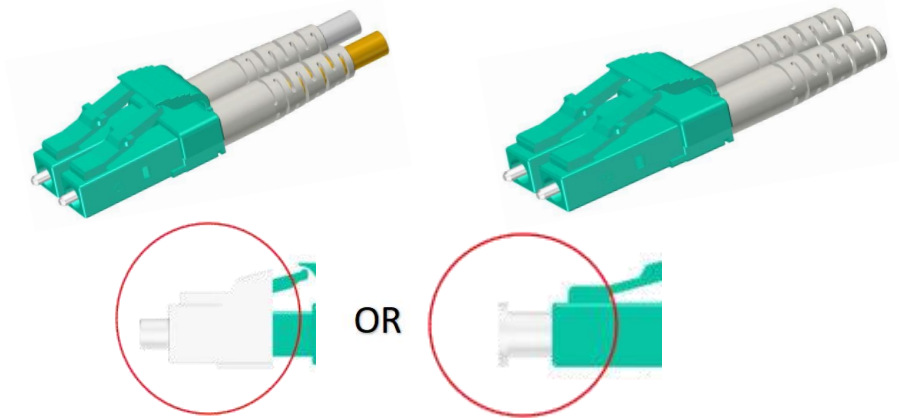


LC Strengthen Connector Specification



Application:

1. Telecommunication Network
3. Data Center Cabling
4. Testing
5. Optic Networks

Features:

1. The connector is designed to meet the requirements of IEC 61754-20
2. Meet the test requirements of GR326-SFF
3. Made of RoHS & REACH Material and UL94-V0 rated type

Description:

JIAWEI LC Strengthen Connector adopts the design of one-piece housing, the LC Strengthen is consistent with the LC standard connector, and the straight pull and side pull are better.

JIAWEI develop and manufacture the high quality components by ourself, this connector meets IEC and the general requirement of GR-326. Also provide you the customized color and boot size, your Logo can be printed on the housing and boot.

Parameter:

Connector	Ferrule Type	Housing	Boot Type	Boot Length	Boot Color
Pre-assemble Dimplex	SM:125.5μm	SM:Blue	2.0mm	12.5mm	White
	MM:127μm	SM:Green	3.0mm	15.6mm	Blue
	SM:125μm	MM:Beige		14.8mm	Red
	MM:144μm	MM OM3:Aqua		19.2mm	Black
		MM OM4:Heather Violet		20.5mm	Yellow
		MM OM5:Lemon Yellow			